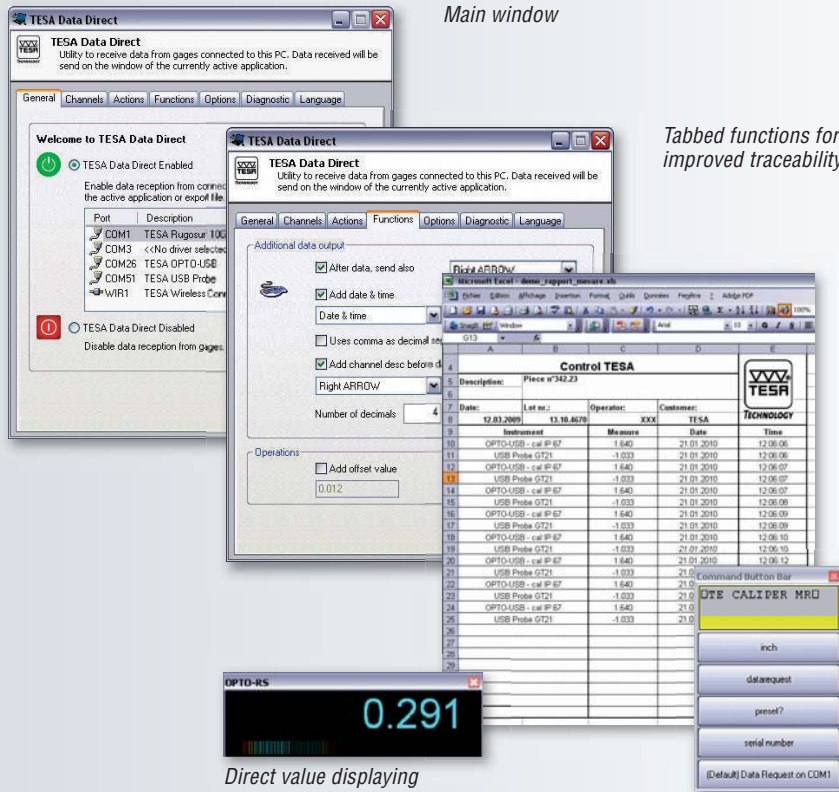


DataDirect

This software solution is an easy way to collect and report in real time all measured values taken with nearly any TESA's precision tools featuring an RS 232 data output.

DataDirect is provided with serial input/output drivers specially configured for TESA's products, but also for those purchased from other manufacturers. It works effectively for data transfer to your data sheets, database, statistical modules or any other Windows-based applications.

With this user-friendly software you will be able to create your own reports for the relevant part inspection.



NP **TESA DataDirect**

04981001

Software including:

- CD for installation
- USB dongle
- Instruction manual (PDF)

For information on functionalities and compatibilities, see page A-9.