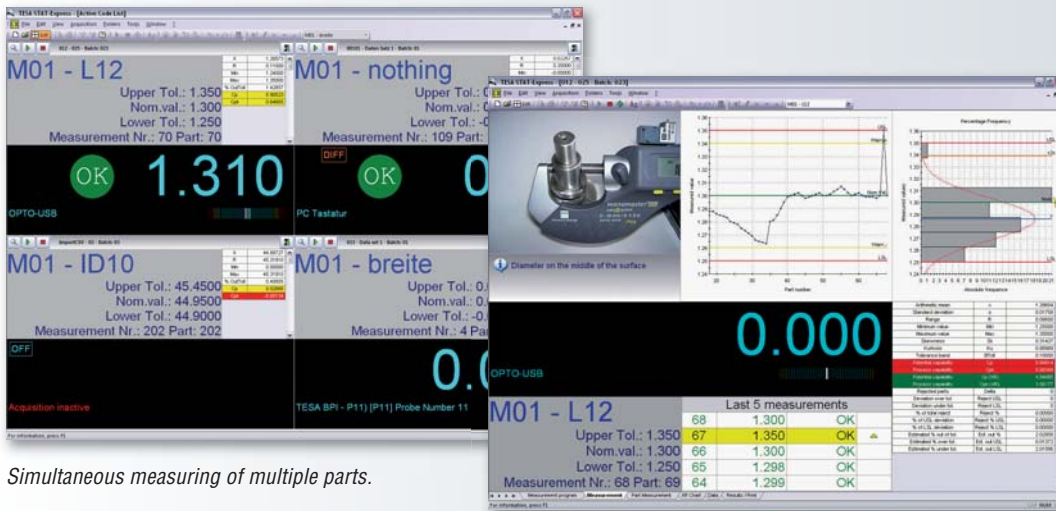


StatExpress

This dedicated software lets quality assurance enter into your manufacturing processes in that it makes it possible for your quality-oriented control charts to be conveniently downloaded, reported, swapped and stored.

StartExpress is compatible with all TESA's products – from the caliper up to the CMM or Vision machine. As integrated component, DataDirect provides the needed flexibility for easy data transfer to most of the electronic gauges currently available on the market.

Running StatExpress you will have the ability to create protocols including the measured values obtained from a single or several handtools, assign tolerances, calculate statistics, print out various measurement reports, compute XR control charts, and much more.



Simultaneous measuring of multiple parts.

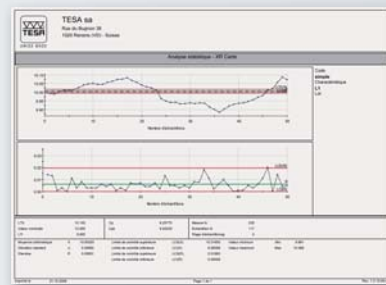
Main window with or without instructions



Detailed report for each measured part features

Code	Dimension	Unit	OK	Probe
D1	1	mm	OK	
D2	1	mm	OK	
D3	1	mm	OK	

Report by measured parts with number of the part series



XR control chart



04981002 TESA StatExpress
Extended programme version

04981003 TESA StatExpress Light
Lightened programme version (see next page)

provided with:

CD for installation – USB dongle – Instruction manual (PDF)

For information on fonctionnalités and compatibilities, report to page A-9.