



Hardened steel inserts

Lapped measuring faces

2 µm (QUICK-CONTROL alone)

Adjustable from 0 up to 10 N.  
Can be reversed from «neutral» to internal or external measuring

Suited plastic case

Identification number

Declaration of conformity

## TESA QUICK-CONTROL C2 for Stationary Use

This versatile shop tool allows 2-point measurement of part series using one mobile insert coupled with the sensor plus another fixed one fitted with a clamp for mounting a dial gauge, precision indicator or axial probe having a 8 mm dia. clamping shaft.

- Quick, easy, dependable and precise measurement (repeatability to 2 µm without the use of the sensor).
- Robust construction, easy to mount and further use.
- Adjustable measuring force.
- Measure workpieces with plan-parallel, cone-shaped or cylindrical surfaces, grooves, through holes and blind bores, short centring shoulders and wall thickness. Also serve to check diameters on gear teeth.
- Detect form and position errors, i.e. roundness, concentricity and coaxiality.



### TESA QUICK-CONTROL 160 C2

Main version within the C2 tool range. Measure mean to very small dimensions (see below for more details).



mm

in

mm

in

Internal dimensions

External dimensions

<b>03330024</b>	<b>QUICK-CONTROL 160 C2</b>	30 ÷ 120	1.19 ÷ 4.72	0 ÷ 90	0 ÷ 3.54
-----------------	-----------------------------	----------	-------------	--------	----------

Provided with the following accessories:

- |                 |  |
|-----------------|--|
| <b>03360022</b> | 1 Steady insert holder, short.   |
| <b>03360027</b> | 1 Pair of long inserts for internal/external diameters, through holes, blind bores, grooves and slots with max. depth to 3,7 mm, max. height to 25 mm. |
| <b>03360026</b> | 1 additional insert, as above but short. For use instead of the long one when measuring at low height.   |

**Option 1 – For small dimensions**

<b>03360065</b>	1 Pair of long inserts with a 8 mm dia. clamping shaft, 6 mm dia. probing head.	22 ÷ 120	0.87 ÷ 4.72	0 ÷ 90	0 ÷ 3.54
-----------------	---	----------	-------------	--------	----------

**Option 2 – For smaller dimensions**

<b>03360031</b>	1 Pair of inserts for checking very small bores.	11.5 ÷ 60	0.46 ÷ 2.36	0 ÷ 90	0 ÷ 3.54
-----------------	--	-----------	-------------	--------	----------

<b>03360024</b>	1 Pair of adapters for 5 mm dia. inserts. For use at probing points with a 8 mm dia.
-----------------	--

<b>03360032</b>	1 Pair of raising blocks used to scale down the width of the slot lying in the middle of the upper tool table.
-----------------	--

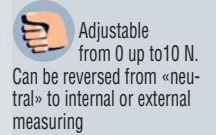
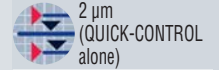
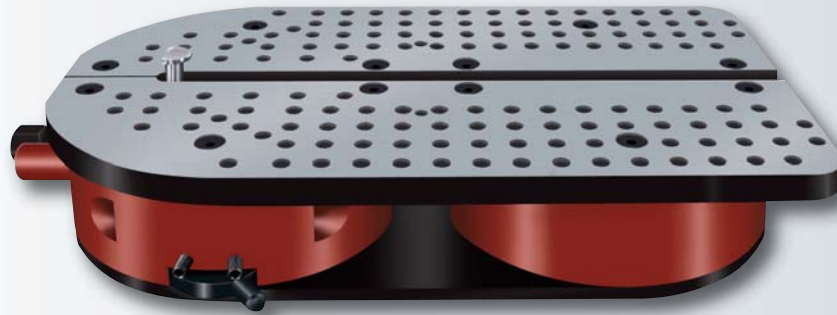
**Option 3 – For large dimensions**

<b>03360023</b>	1 Fixed insert holder, long.	30 ÷ 150	1.19 ÷ 5.9	0 ÷ 125	0 ÷ 4.93
-----------------	------------------------------	----------	------------	---------	----------



### TESA QUICK-CONTROL 160 C2 JS

Identical to TESA QUICK-CONTROL 160 C2, but with extended application range.



№	=	Internal dimensions		External dimensions	
		mm	in	mm	in
03330025	<b>QUICK-CONTROL 160 C2 JS</b>	30 ÷ 275	1.19 ÷ 10.8	0 ÷ 245	0 ÷ 9.64
<i>Provided with the following standard accessories:</i>					
03360022	1 Insert holder, short				
03360026	1 Standard insert, short				
03360027	1 Pair of standard inserts, long				

The options 1 and 2 for small and smaller dimensions described earlier can also be used on the model 160 C2 JS.



### TESA QUICK-CONTROL 350 C2

Identical to Quick-Control 160 C2 JS for large dimensions, but specially made for inspecting heavy workpieces.

№	=	Internal dimensions		External dimensions	
		mm	in	mm	in
03330001	<b>QUICK-CONTROL 350 C2</b>	47 ÷ 430	1.8 ÷ 16.93	0 ÷ 350	0 ÷ 13.77
<i>Provided with the following standard accessories:</i>					
03360057	1 Pair of standard inserts, short for diameters from 62 mm				
03360058	Same as above, but long				
03360061	1 Fixed insert holder, short, L = 60 mm, with a 12 mm dia. clamping bore				
03360062	1 Fixed insert holder, long, L = 200 mm, with a 12 mm dia. clamping bore				



Hardened steel inserts

Lapped measuring faces

2 µm (QUICK-CONTROL alone)

Adjustable from from 0 up to 10 N.  
Can be reversed from «neutral» to internal or external measuring

Suited plastic case

Identification number

Declaration of conformity

## TESA QUICK-CONTROL C3 for Stationary Use

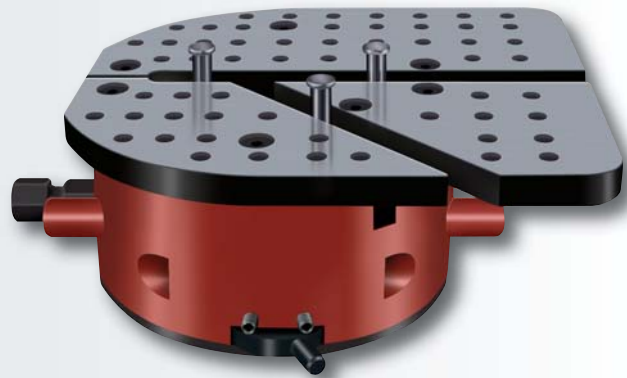
Having the same features and capabilities as TESA QUICK-CONTROL C2, this model also provides an extra transverse insert.

Both mobile and fixed inserts are used to perform 2-point measurements. The third one moves transversally, thus enabling a correct positioning of the workpiece, without the need for locating the culmination point. This insert also allows workpiece diameter and form errors to be measured at the same time.

### TESA QUICK-CONTROL 160 C3 AL

Main version within the C3 tool range for mean to small dimensions.

With a mounted stop-like insert that can be moved in the 45° V-slot.

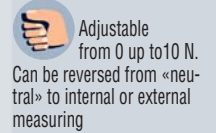
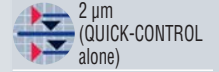
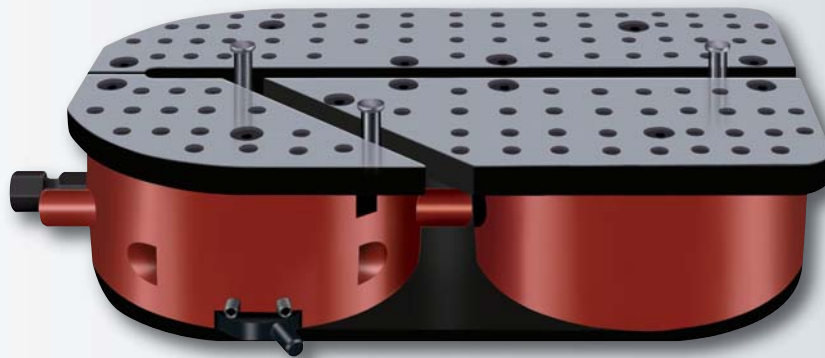


No	=	mm		in	
		Internal dimensions	External dimensions	Internal dimensions	External dimensions
<b>03330026</b>	<b>QUICK-CONTROL C3 AL</b>	32 ÷ 120	1.26 ÷ 4.72	0 ÷ 90	0 ÷ 3.54
<i>Provided with the following accessories:</i>					
<b>03360067</b>	1 Mobile standard insert, 10 mm dia. spherical probing head				
<b>03360068</b>	Pair of standard inserts for fixed holder, 10 mm dia. spherical probing head, L = 36 mm				
<b>03360069</b>	1 Fixed insert holder				
<b>03360070</b>	1 Fixed stop holder				
<b>Option 1 – For small dimensions</b>					
<b>03360066</b>	3 long inserts with a 8 mm clamping shaft, 6 mm dia. probing head.	25 ÷ 120	0.99 ÷ 4.72	0 ÷ 90	0 ÷ 3.54
<b>Option 2 – For smaller dimensions</b>					
<b>03360072</b>	1 Fixed insert holder for adapter	15 ÷ 60	0.6 ÷ 2.36	0 ÷ 50	0 ÷ 1.97
<b>03360073</b>	1 Fixed insert holder for the third point				
<b>03360074</b>	3 Adapters				
<b>03360075</b>	3 long inserts with a 5 mm clamping shaft for small bores				
<b>Option 3 – For large dimensions</b>					
<b>03360023</b>	1 Fixed insert holder, long	32 ÷ 150	1.26 ÷ 5.9	0 ÷ 125	0 ÷ 4.93
<b>03360076</b>	1 Fixed insert holder for the third point, intermediate length = 72 mm				



### TESA QUICK-CONTROL 160 C3 JS

Identical to TESA QUICK-CONTROL 160 C3 AI, but with extended application range.



Internal dimensions

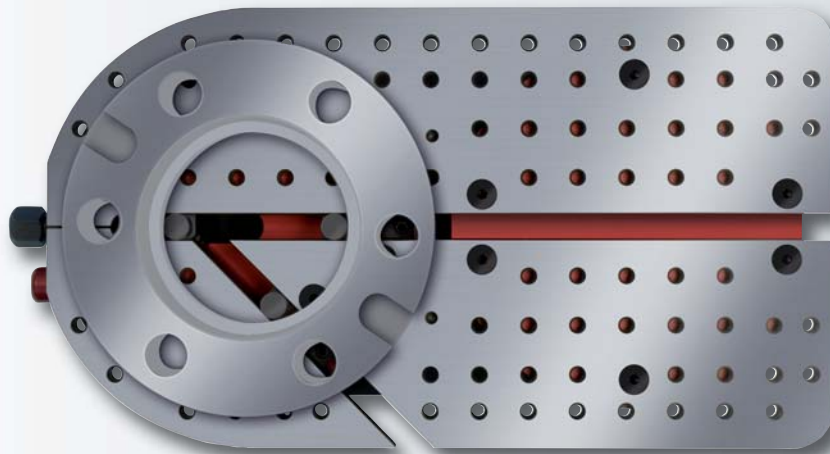
External dimensions

**03330027 QUICK-CONTROL 160 C3 JS**

Provided with the following standard accessories:

<b>03360067</b>	1 Mobile standard insert, long, 10 mm dia. spherical probing head	32 ÷ 190	1.26 ÷ 7.48	0 ÷ 170	0 ÷ 6.69
		(3 points)	(3 points)	(3 points)	(3 points)
<b>03360068</b>	Pair of standard inserts for fixed stop and support, 10 mm dia. spherical probing head, L = 36 mm	32 ÷ 275	1.26 ÷ 10.8	0 ÷ 245	0 ÷ 9.65
		(2 points)	(2 points)	(2 points)	(2 points)
<b>03360069</b>	1 Fixed insert holder				
<b>03360070</b>	1 Fixed stop holder				

The options 1 and 2 for small and smaller dimensions described earlier can also be used on the model 160 C3 JS.



### TESA QUICK-CONTROL 160 C3 90 ST2

Special model for small dimensions. Features a mounted stop-like insert that can be moved in the 90° V-slot.



Hardened steel inserts

Lapped measuring faces

2 µm (QUICK-CONTROL alone)

Adjustable from 0 up to 10 N. Can be reversed from «neutral» to internal or external measuring

Suited plastic case

Identification number

Declaration of conformity



mm



in



mm



in

Internal dimensions

External dimensions

<b>03330028</b>	<b>QUICK-CONTROL 160 C3 90 ST2</b>	10 ÷ 80	0.4 ÷ 3.14	0 ÷ 55	0 ÷ 2.16
-----------------	------------------------------------	---------	------------	--------	----------

Provided with the following standard accessories:

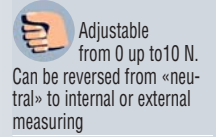
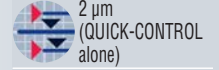
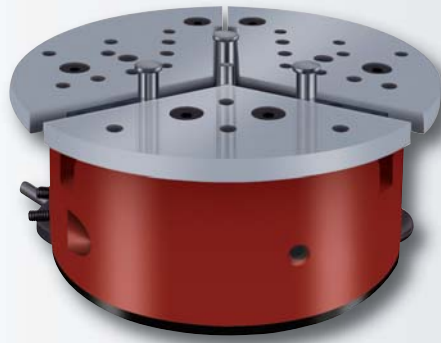
- 03360072** 1 Fixed insert holder for adapter
- 03360073** 1 Fixed insert holder for the third point and adapter
- 03360074** 3 Adapters
- 03360075** 3 Long inserts with as 5 mm dia. shaft
- 03360067** 1 Mobile standard insert, 10 mm dia. probing head
- 03360068** 1 Pair of standard inserts for fixed holder, 10 mm dia. spherical probing head, L = 36 mm



### TESA QUICK-CONTROL 160 C3 120

Measures internal and external dimensions with 2-point contact. Features one mobile and two fixed inserts lying 120° apart. Specially designed for bore measurement.

Uses 2 setting rings matching both upper and lower limit values of the tolerated size for display setting and calibration. Recommended sensor: MC 2030-FC precision indicator with order No. S19070744.



mm

in

mm

in

Internal dimensions

External dimensions

**03330029 QUICK-CONTROL 160 C3 120**

≥ 25

≥ 0.99

≤ 80

≤ 3.15

Provided with the following standard accessories:

**03360067** 1 Mobile standard insert, Ø 10 mm dia. spherical probing head

**03360068** 1 Pair of standard inserts for fixed holder, 10 mm dia. spherical probing head, L = 36 mm

**03360022** 2 Fixed insert holders, short



**Standard Accessories for TESA QUICK-CONTROL**



<b>03360022</b>	1 Fixed insert holder, short.
<b>03360023</b>	1 Fixed insert holder, long.
<b>03360024</b>	1 Pair of adapters for 5 mm dia. inserts, 8 mm dia. clamping bore.
<b>03360026</b>	1 Standard insert, short, 8 mm dia. clamping shaft.
<b>03360027</b>	1 Pair of standard inserts, long, 8 mm dia. clamping shaft, for internal/external dimensions, through bores, blind bores, grooves with max. depth to 3,7 mm, max. height to 25 mm.
<b>03360028</b>	1 Pair of cone-shaped inserts, short, 8 mm dia. clamping shaft.
<b>03360029</b>	1 Pair of cone-shaped inserts, short, 8 mm dia. clamping shaft.
<b>03360031</b>	1 Pair of long inserts, 5 mm dia. clamping shaft, for smaller bores.
<b>03360032</b>	1 Pair of resting blocks used to scale down the width of the slot lying in the middle of the upper tool table. For use with 5 mm dia. inserts.
<b>03360033</b>	1 Extension, 20 mm long, for dial gauge plunger.
<b>03360034</b>	1 Blocking shoe for short or long insert holder.
<b>03360037</b>	1 Pair of short inserts, 8 mm dia. clamping shaft, for grooves with max. depth to 7,5 mm.
<b>03360038</b>	1 Pair of long inserts, 8 mm dia. clamping shaft, for grooves with max. depth to 7,5 mm.
<b>03360039</b>	1 Pair of short inserts, 8 mm dia. clamping shaft, for grooves with max. depth to 9,5 mm.
<b>03360040</b>	1 Pair of long inserts, 8 mm dia. clamping shaft, for grooves with max. depth to 9,5 mm.
<b>03360042</b>	1 Pair of long inserts, 8 mm dia. clamping shaft, for grooves with max. depth to 3,0 mm.
<b>03360044</b>	1 Pair of inserts for measuring centre-distances.
<b>03360045</b>	1 Insert for probe holder, M2,5 x 0,40 coupling thread.
<b>03360050</b>	1 Insert holder with stop included. To to be mounted on the upper plate, height adjustable from 10 to 20 mm.
<b>03360051</b>	1 Insert holder with stop included. To to be mounted on the upper plate, height adjustable from 18 to 70 mm.
<b>03360053</b>	1 Measuring stop with adjustable slot for use in any measuring position.
<b>03360057</b>	1 Pair of standard inserts, short, for QUICK CONTROL 350 C2.
<b>03360058</b>	1 Pair of standard inserts, long, for QUICK CONTROL 350 C2.
<b>03360061</b>	1 Short insert holder, L = 60 mm, with a 12 mm dia. mounting bore, for QUICK CONTROL 350 C2.
<b>03360062</b>	1 Long insert holder, L = 200 mm, with a 12 mm dia. mounting bore, for QUICK CONTROL 350 C2.
<b>03360064</b>	1 Angular blocking shoe, for fixed insert holder on QUICK CONTROL 350 C2.
<b>03360065</b>	1 Pair of long inserts, 8 mm dia. clamping shaft, 6 mm probing head, for small dimensions.
<b>03360066</b>	3 Pair of long inserts, 8 mm dia. clamping shaft, 6 mm probing head, for small dimensions.
<b>03360067</b>	1 Mobile standard insert, 10 mm dia. spherical probing head.
<b>03360068</b>	1 Pair of standard inserts for fixed holders, 10 mm dia. spherical probing head, L = 36 mm.
<b>03360069</b>	1 Fixed insert holder for QUICK CONTROL C3.
<b>03360070</b>	1 Holder for mounted stop-like insert on QUICK CONTROL C3.
<b>03360071</b>	1 Pair of long inserts, 8 mm dia. clamping shaft, 3 mm probing head, for small dimensions.
<b>03360072</b>	1 Fixed insert holder for adapters.
<b>03360073</b>	1 Fixed holder for stop-like insert and adapter.
<b>03360074</b>	3 Adapters.
<b>03360075</b>	3 Long inserts, 5 mm clamping shaft.
<b>03360076</b>	1 Fixed holder for stop-like insert, intermediate length = 72 mm.
<b>03360077</b>	1 Pair of long inserts, 8 mm dia. clamping shaft, 4,8 mm probing head, for small dimensions.
<b>03360078</b>	1 Fixed holder for stop-like insert, intermediate length = 56 mm.

