

MERCER and COMPAC Dial Gauges – Standard
58 mm dial diameter, 0,1 mm reading



EN ISO 463
Factory standard

0,1 mm

1,5 mm

Rotating dial

Full-metal case housing.
Fixing shank and plunger in hardened stainless steel.

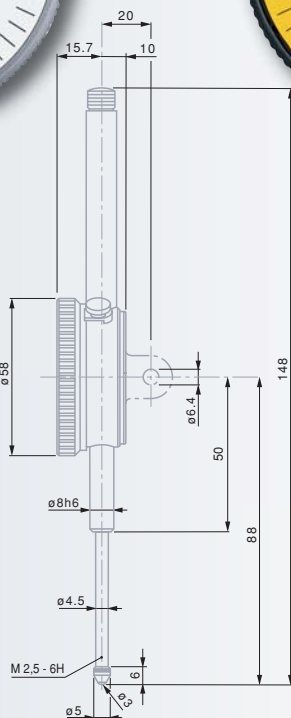
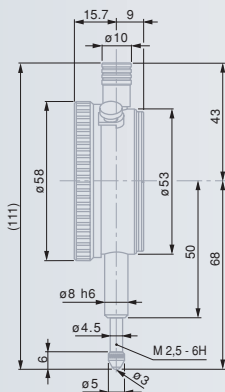
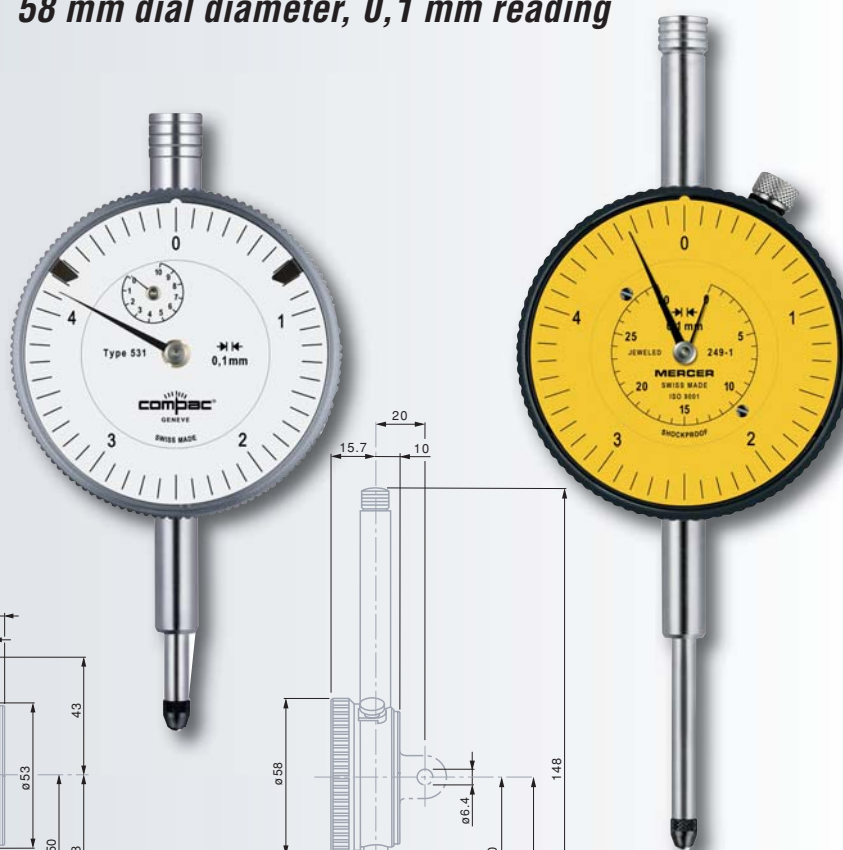
Adjustable tolerance markers
Measuring insert with a M2,5 thread.

3 mm dia. ball tip, already mounted.

Cardboard box

Identification number

Inspection report with a declaration of conformity



mm

mm

mm

mm

Standard line

| | | | | | | | | |
|-----------------|--------------|-----|----|------|---|---|---|-------------|
| 531 | | 0,1 | 10 | 10,5 | ● | – | 5 | 0 ÷ 2,5 ÷ 5 |
| 531B | | 0,1 | 10 | 10,5 | ● | – | 5 | 0 ÷ 2,5 ÷ 5 |
| 01416038 | 249-1 | 0,1 | 30 | 30,5 | ● | ● | 5 | 0 ÷ 5 |

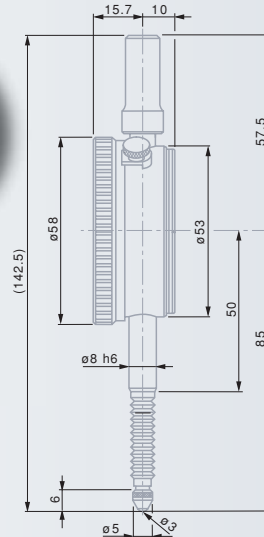
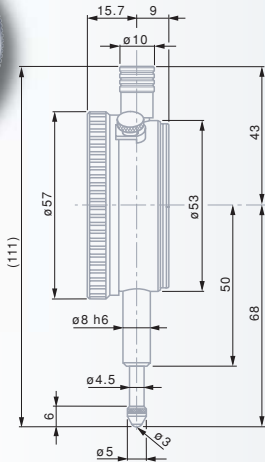
Permissible limits of a metrological characteristic (MPE/MPL)

| | 10 mm | 30 mm |
|----------------------|---------|---------|
| Deviation span | 30 µm | 30 µm |
| Total deviation span | 35 µm | 40 µm |
| Repeatability limit | 5 µm | 10 µm |
| Max. hysteresis | 10 µm | 10 µm |
| Measuring force | ≤ 1,5 N | ≤ 2,2 N |



TESA YE, MERCER and COMPAC Dial Gauges – Standard

58 mm dial diameter, 0,01 mm reading



EN ISO 463
Factory
standard



0,01 mm



1,5 mm



Rotating dial



Full-metal
case housing.
Fixing shank
and plunger in hardened
stainless steel



Adjustable
tolerance markers
Measuring insert
with a M2,5 thread.



3 mm dia.
ball tip, already
mounted.



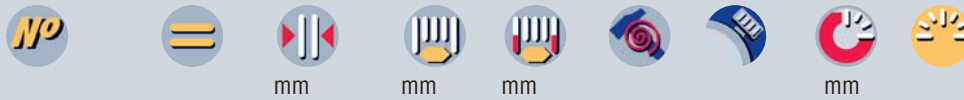
Cardboard box



Identification
number



Inspection report
with a declaration
of conformity



Standard line

| | | | | | | | | |
|----------|-------|------|----|------|---|---|---|--------------|
| 01412011 | | 0,01 | 10 | 10,5 | ● | – | 1 | 0 ÷ 50 ÷ 100 |
| 01412310 | | 0,01 | 10 | 10,5 | – | – | 1 | 0 ÷ 50 ÷ 100 |
| 01416020 | 250-1 | 0,01 | 10 | 10,5 | – | ● | 1 | 0 ÷ 50 ÷ 0 |
| 01416021 | 251-1 | 0,01 | 10 | 10,5 | – | ● | 1 | 0 ÷ 50 ÷ 100 |
| 512K | JET | 0,01 | 10 | 10,5 | – | – | 1 | 0 ÷ 50 ÷ 100 |
| 532 | | 0,01 | 10 | 10,5 | ● | – | 1 | 0 ÷ 50 ÷ 100 |

Standard line IP54 protected against the penetration of liquids

| | | | | | | | | |
|----------|--|------|----|------|---|---|---|--------------|
| 01412411 | | 0,01 | 10 | 10,5 | – | – | 1 | 0 ÷ 50 ÷ 100 |
| 532E | | 0,01 | 10 | 10,5 | ● | – | 1 | 0 ÷ 50 ÷ 100 |

Standard line with restricted reading range

| | | | | | | | | |
|----------|--|------|------|---|---|---|------|-------------|
| 01412211 | | 0,01 | ±0,4 | 4 | ● | – | 1,27 | 40 ÷ 0 ÷ 40 |
| 01416032 | | 0,01 | ±0,4 | 4 | ● | – | 1,27 | 40 ÷ 0 ÷ 40 |
| 532S | | 0,01 | ±0,4 | 4 | ● | ● | 1,27 | 40 ÷ 0 ÷ 40 |
| 533S | | 0,01 | ±0,5 | 4 | ● | – | 1,27 | 50 ÷ 0 ÷ 50 |

Permissible limits of a metrological characteristic (MPE/MPL)

| | Deviation span | 10 mm | ±0,4/±0,5 mm |
|--|---|--------------------|--------------|
| | Deviation span within the local measuring span 0,10 mm | 15 µm | 7 µm |
| | Total deviation span | 8 µm | 5 µm |
| | Repeatability limit | 17 µm | 9 µm |
| | Repeatability limit | 3 µm | 3 µm |
| | Max. hysteresis | 3 µm | 3 µm |
| | Max. hysteresis | 3 µm | 3 µm |
| | Measuring force | Standard line | ≤ 1,5 N |
| | Measuring force | Standard line IP54 | ≤ 2,2 N |

MERCER and COMPAC Dial Gauges – Standard
58 mm dial diameter, 0,002 mm reading



EN ISO 463
Factory standard

0,002 mm

1,5 mm

Rotating dial

Full-metal case housing.
Fixing shank and plunger in hardened stainless steel.

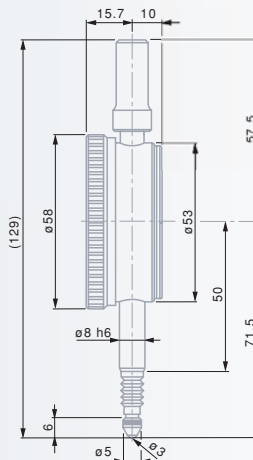
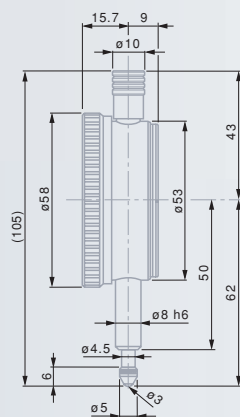
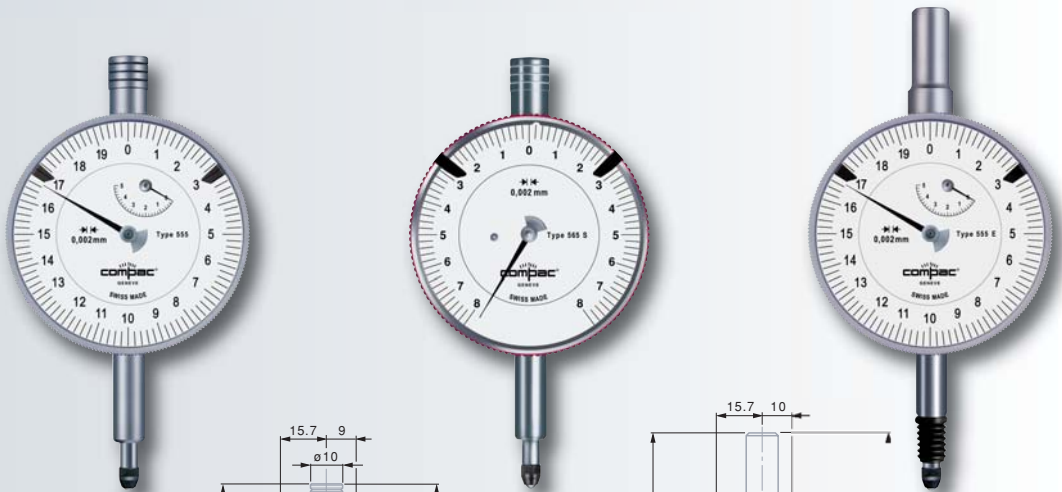
Adjustable tolerance markers
Measuring insert with M2,5 thread.

3 mm dia. ball tip, already mounted.

Cardboard box

Identification number

Inspection report with a declaration of conformity



Standard line

| | | | | | | | | |
|-----------------|--------------|-------|---|-----|---|---|-----|-------------|
| 01416034 | 253-1 | 0,002 | 5 | 5,3 | – | ● | 0,2 | 0 ÷ 10 ÷ 0 |
| 01416035 | 254-1 | 0,002 | 5 | 5,3 | – | ● | 0,2 | 0 ÷ 10 ÷ 20 |
| 555 | | 0,002 | 5 | 5,3 | ● | – | 0,2 | 0 ÷ 10 ÷ 20 |

Standard line IP54 protected against the penetration of liquids

| | | | | | | | | |
|-------------|--|-------|---|-----|---|---|-----|-------------|
| 555E | | 0,002 | 5 | 5,3 | ● | – | 0,2 | 0 ÷ 10 ÷ 20 |
|-------------|--|-------|---|-----|---|---|-----|-------------|

Standard line with restricted reading range

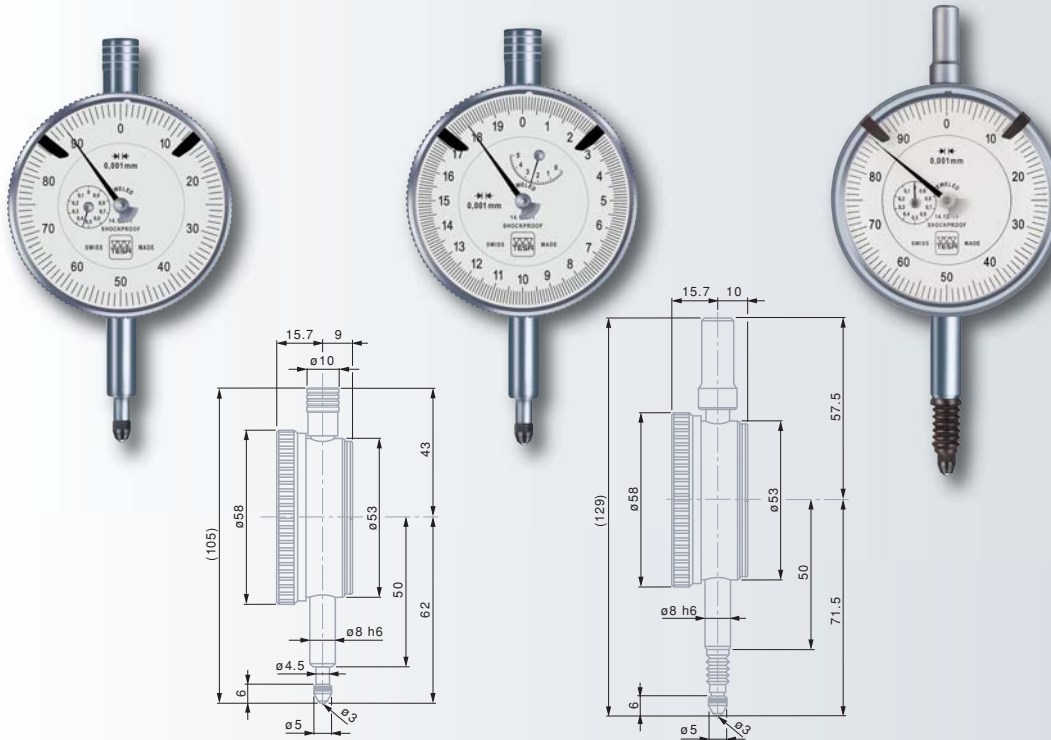
| | | | | | | | | |
|-------------|--|-------|-------|-----|---|---|-----|-----------|
| 565S | | 0,002 | ±0,08 | 3,3 | ● | – | 0,2 | 8 ÷ 0 ÷ 8 |
|-------------|--|-------|-------|-----|---|---|-----|-----------|

Permissible limits of a metrological characteristic (MPE/MPL)

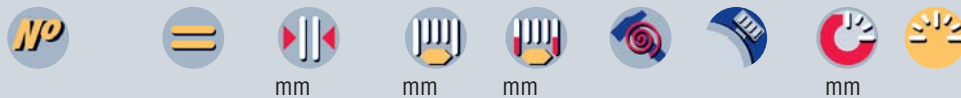
| | | 5 mm | ±0,08 mm |
|--|----------------------|---------------|--------------------|
| | Deviation span | 12 µm | 4 µm |
| | Total deviation span | 14 µm | 4 µm |
| | Repeatability limit | 2 µm | 1 µm |
| | Max. hysteresis | 2 µm | 1 µm |
| | Measuring force | Standard line | Standard line IP54 |
| | | ≤ 1,5 N | ≤ 1,5 N |
| | | | ≤ 1,7 N |



TESA YE and COMPAC Dial Gauges – Standard 58 mm dial diameter, 0,001 mm reading



- ✓
- EN ISO 463
Factory standard
- 0,001 mm
- 1,5 mm
- Rotating dial
- Full-metal case housing.
Fixing shank and plunger in hardened stainless steel.
- Adjustable tolerance markers
Measuring insert with M2,5 thread.
- 3 mm dia. ball tip, already mounted.
- Cardboard box
- Identification number
- Inspection report with a declaration of conformity



Standard line

| Model | Reading | Span | Plunger | Tip | Shank | Force | Range |
|----------|---------|------|---------|-----|-------|-------|---------------|
| 01412611 | 0,001 | 5 | 5,3 | ● | – | 0,2 | 0 ÷ 100 ÷ 200 |
| 556 | 0,001 | 5 | 5,3 | ● | – | 0,2 | 0 ÷ 10 ÷ 20 |
| 01412511 | 0,001 | 1 | 1,5 | ● | – | 0,1 | 0 ÷ 50 ÷ 100 |
| 567 | 0,001 | 1 | 3,3 | ● | – | 0,1 | 0 ÷ 5 ÷ 10 |

Standard line IP54 protected against the penetration of liquids

| | | | | | | | |
|----------|-------|---|-----|---|---|-----|--------------|
| 556E | 0,001 | 5 | 5,3 | ● | – | 0,2 | 0 ÷ 10 ÷ 20 |
| 01412711 | 0,001 | 1 | 1,5 | ● | – | 0,1 | 0 ÷ 50 ÷ 100 |
| 567E | 0,001 | 1 | 3,3 | ● | – | 0,1 | 0 ÷ 5 ÷ 10 |

Standard line with restricted reading range

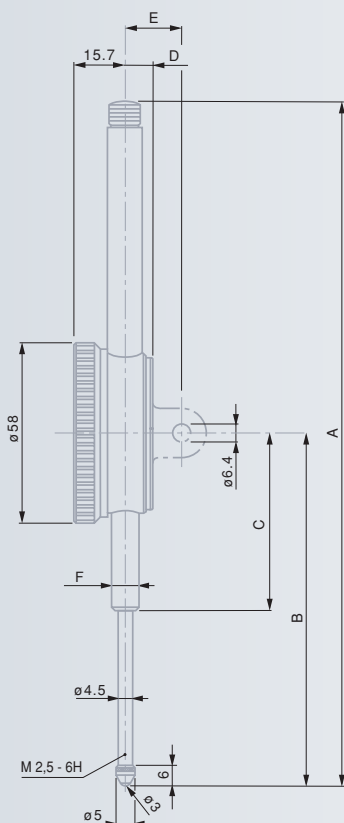
| | | | | | | | |
|------|-------|-------|-----|---|---|-----|-----------|
| 567S | 0,001 | ±0,04 | 3,3 | ● | – | 0,1 | 4 ÷ 0 ÷ 4 |
|------|-------|-------|-----|---|---|-----|-----------|

Permissible limits of a metrological characteristic (MPE/MPL)

| | 5 mm | 1 mm | ±0,04 |
|----------------------|--------------------|--------------------|--------------------|
| Deviation span | 12 µm | 4 µm | 4 µm |
| Total deviation span | 14 µm | 5 µm | 4 µm |
| Repeatability limit | 2 µm | 1 µm | 1 µm |
| Max. hysteresis | 2 µm | 1 µm | 1 µm |
| Measuring force | Standard line | Standard line | Standard line |
| | ≤ 1,5 N | ≤ 1,5 N | ≤ 1,5 N |
| | Standard line IP54 | Standard line IP54 | Standard line IP54 |
| | ≤ 1,7 N | ≤ 1,7 N | ≤ 1,7 N |

**TESA YE, MERCER and COMPAC
Dial Gauges – Standard**

**58 mm dial diameter, 0,01 mm reading,
long range**



| | 30 mm | 50 mm | 100 mm |
|----------|-------|-------|--------|
| A | 148 | 228 | 390 |
| B | 88 | 117,2 | 211,6 |
| C | 50 | 60 | 103,6 |
| D | 10 | 9 | 9 |
| E | 20 | 19 | 19 |
| F | Ø 8h6 | Ø 8h6 | Ø 8h6 |



EN ISO 463
Factory
standard



0,01 mm



1,5 mm



Rotating dial



Full-metal
case housing.
Fixing shank
and plunger in hardened
stainless steel.



Adjustable
tolerance markers
Measuring insert
with M2,5 thread.



3 mm dia.
ball tip, already
mounted.



Cardboard box



Identification
number



Inspection report
with a declaration
of conformity



mm



mm



mm



mm



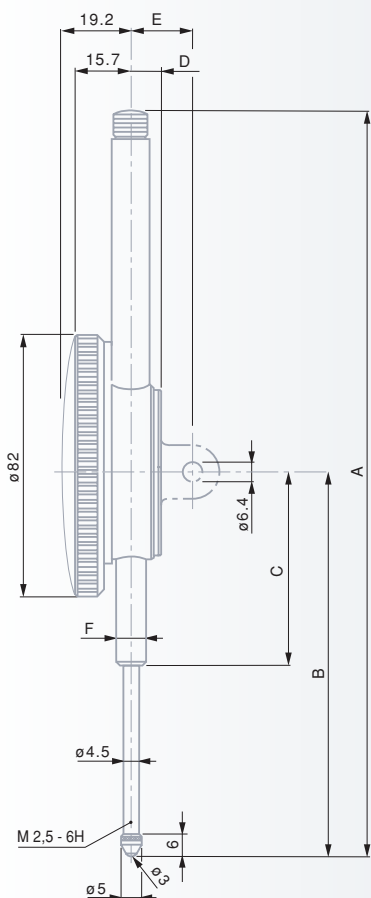
Standard line with long range

| | | | | | | | | |
|-----------------|--------------|------|-----|-------|---|---|---|--------------|
| 01412012 | | 0,01 | 30 | 30,5 | ● | – | 1 | 0 ÷ 50 ÷ 100 |
| 01416039 | 252-1 | 0,01 | 30 | 30,5 | ● | ● | 1 | 0 ÷ 50 ÷ 100 |
| 712 | | 0,01 | 30 | 30,5 | ● | – | 1 | 0 ÷ 50 ÷ 100 |
| 01412013 | | 0,01 | 50 | 50,5 | ● | – | 1 | 0 ÷ 50 ÷ 100 |
| 722 | | 0,01 | 50 | 50,5 | ● | – | 1 | 0 ÷ 50 ÷ 100 |
| 732 | | 0,01 | 100 | 100,5 | ● | – | 1 | 0 ÷ 50 ÷ 100 |

Permissible limits of a metrological characteristic (MPE/MPL)

| | 30 mm | 50 mm | 100 mm |
|--|---------|---------|---------|
| Deviation span Total deviation span | 20 µm | 25 µm | 30 µm |
| | 25 µm | 30 µm | 35 µm |
| Repeatability limit | 3 µm | 3 µm | 3 µm |
| Max. hysteresis | 5 µm | 5 µm | 8 µm |
| Measuring force | ≤ 2,2 N | ≤ 2,5 N | ≤ 3,2 N |

TESA YE and COMPAC Dial Gauges – Standard 82 mm dial diameter, 0,01 mm reading, long range



| mm | 10 mm | 30 mm | 50 mm | 100 mm | 200 mm |
|----------|-------|-------|-------|--------|--------|
| A | 121 | 158 | 228 | 390 | 752 |
| B | 78 | 98 | 117,2 | 211,6 | 437 |
| C | 60 | 60 | 60 | 103,6 | 150 |
| D | 9 | 10 | 9 | 9 | 10,4 |
| E | 19 | 20 | 19 | 19 | 20,2 |
| F | Ø 8h6 | Ø 8h6 | Ø 8h6 | Ø 8h6 | Ø 12 |



✓



EN ISO 463
Factory
standard



0,01 mm



2,3 mm



Rotating dial



Full-metal
case housing.
Fixing shank
and plunger in hardened
stainless steel



Measuring insert
with a M2,5 thread



3 mm dia.
ball tip, already
mounted.



Cardboard box



Identification
number



Inspection report
with a declaration
of conformity



mm



mm



mm



mm



Standard line with long range

| | 0,01 | 10 | 10,5 | – | – | 1 | 0 ÷ 50 ÷ 100 |
|-----------------|------|-----|-------|---|---|---|--------------|
| 01412311 | 0,01 | 10 | 10,5 | – | – | 1 | 0 ÷ 50 ÷ 100 |
| 712G | 0,01 | 30 | 30,5 | ● | – | 1 | 0 ÷ 50 ÷ 100 |
| 722G | 0,01 | 50 | 50,5 | ● | – | 1 | 0 ÷ 50 ÷ 100 |
| 01412014 | 0,01 | 100 | 100,5 | ● | – | 1 | 0 ÷ 50 ÷ 100 |
| 732G | 0,01 | 100 | 100,5 | ● | – | 1 | 0 ÷ 50 ÷ 100 |
| 732GB | 0,01 | 100 | 100,5 | ● | ● | 1 | 0 ÷ 50 ÷ 100 |
| 752G | 0,01 | 200 | 200,5 | ● | – | 1 | 0 ÷ 50 ÷ 100 |

Permissible limits of a metrological characteristic (MPE/MPL)

| | 10 mm | 30 mm | 50 mm | 100 mm | 200 mm |
|----------------------|---------|---------|---------|---------|--------|
| Deviation span | 15 µm | 20 µm | 25 µm | 30 µm | 45 µm |
| Total deviation span | 17 µm | 25 µm | 30 µm | 35 µm | 50 µm |
| Repeatability limit | 3 µm | 3 µm | 3 µm | 3 µm | 3 µm |
| Max. hysteresis | 3 µm | 5 µm | 5 µm | 8 µm | 10 µm |
| Measuring force | ≤ 1,4 N | ≤ 2,2 N | ≤ 2,5 N | ≤ 3,2 N | ≤ 4 N |

COMPAC Dial Gauge – Standard
82 mm dial diameter, 0,001 mm reading



EN ISO 463
 Factory
 standard

0,001 mm

2,2 mm

Rotating dial

Full-metal
 case housing.
 Fixing shank
 and plunger in hardened
 stainless steel

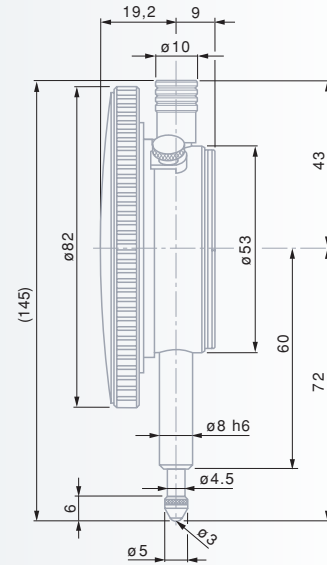
Measuring insert
 with a M2,5 thread

3 mm dia.
 ball tip, already
 mounted.

Cardboard box

Identification
 number

Inspection report
 with a declaration
 of conformity



mm



mm



mm



mm



Standard line

556G

0,001

5

5,3



0,2

0 ÷ 10 ÷ 20

Permissible limits of a metrological characteristic (MPE/MPL)

| | | | |
|--|----------------------|--|---------|
| | | | 5 mm |
| | Deviation span | | 12 µm |
| | Total deviation span | | 14 µm |
| | Repeatability limit | | 2 µm |
| | Max. hysteresis | | 2 µm |
| | Measuring force | | ≤ 1,5 N |